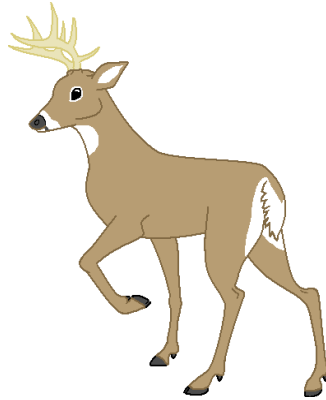


The Glass Greenhouse

We Grow Flowers Just for You



Deer Resistant Plants

Perennials: Spring Bloom Time		
Alliums Chives Daffodils	Dicentra (Bleeding Heart) Forget-Me-Not Helebore (Lenten Rose)	Lily-of-the-Valley Peony

Perennials: Summer Bloom Time			
Artemesia Agastache Alchemilla (Lady's Mantle) Campanula Caryopteris Cerastium	Coreopsis Cranesbill (Geranium) Digitalis (Foxglove) Euphorbia – Chameleon Perennial Ferns Perennial Grasses Heuchera	Hypericum (St. John's Wort) Lavender Lupine Monarda Nepeta (Catmint) Onothera (Evening Primrose)	Perovskia (Russian Sage) Platycodon Perennial Salvia Stachys (Lamb's Ear) Veronica

Perennials: Fall Bloom Time
Rudebeckia (Black-Eyed Susan)

Annuals		Shrubs
Ageratum Dusty Miller Dianthus Lantana Marigold Salvia Scaevola	Snapdragons Wax Begonias Flowering Vinca	Andromeda Aruncus Boxwood Buddlea (Butterfly Bush) Crape Myrtle Leyland Cypress Spirea

Disclaimer:

Hungry deer will eat almost anything but these are their least favorite snacks. In a really bad deer area we also recommend they be combined with a deer repellent and physical barriers if necessary.

Please accept this list as a "general recommendation."

1350 Main Road (Route 25), Jamesport ♦ (631) 722-2121

Open 7 Days, 8 a.m. - 6 p.m. ♦ www.theglassgreenhouse.com

[Find us on facebook!](#)